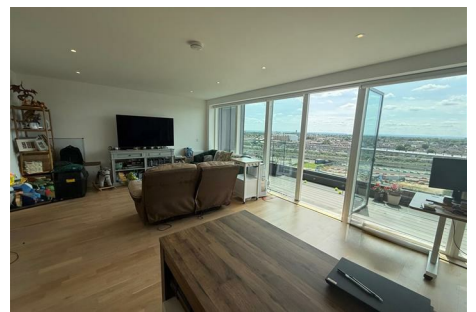
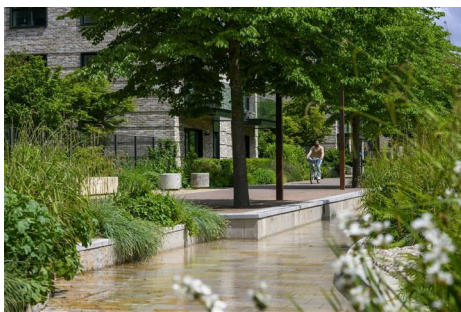




# Parkfields

Estates



## Greenleaf Walk , Southall, UB1 1FR

Nestled in the prestigious Green Quarter of Southall, this modern penthouse apartment at Greenleaf Walk offers an exceptional living experience. With three spacious bedrooms and two well-appointed bathrooms, this property is perfect for families seeking both comfort and style.

As part of a luxury Berkeley Homes development, residents can enjoy a range of exclusive amenities, including a state-of-the-art gym, a movie area, and a welcoming seating area within the concierge service. The sophisticated design of the apartment features high-end finishes throughout, ensuring a contemporary and elegant atmosphere.

One of the standout features of this penthouse is the breath-taking view from the living room and balcony, which overlooks beautifully landscaped gardens. This scenic outlook provides a tranquil setting, ideal for relaxation and family gatherings. The large green area at the front of the property is an added bonus, making it a wonderful space for children to play and explore.

Offers In The Region Of £650,000

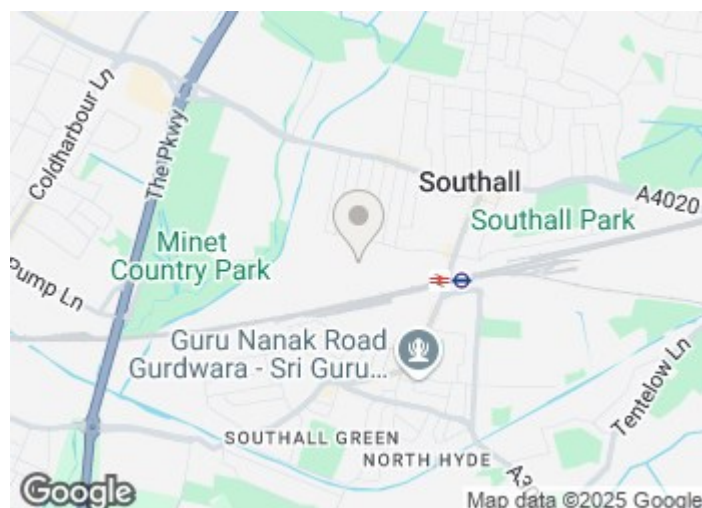


# Flat 86 Greenleaf Walk

, Southall, UB1 1FR



- Luxury Living - Elegant 1,061 sq ft three bedroom apartment
- Private Outdoor Retreat - Generous balcony with sweeping views and natural light
- Nature at Your Doorstep - 13 acres of landscaped parkland and green spaces
- Open Plan Elegance - Bright and airy living and dining space
- Exclusive Lifestyle - Residents-only gym, concierge service, and private screening room
- Eco-Conscious Living - Part of one of the UK's most biodiverse communities
- Refined Finishes - Contemporary, high-end design throughout
- Canal-Side Tranquillity - Over 1km of serene waterfront frontage
- Family-friendly Environment - Private gardens, children's play areas, and communal parks

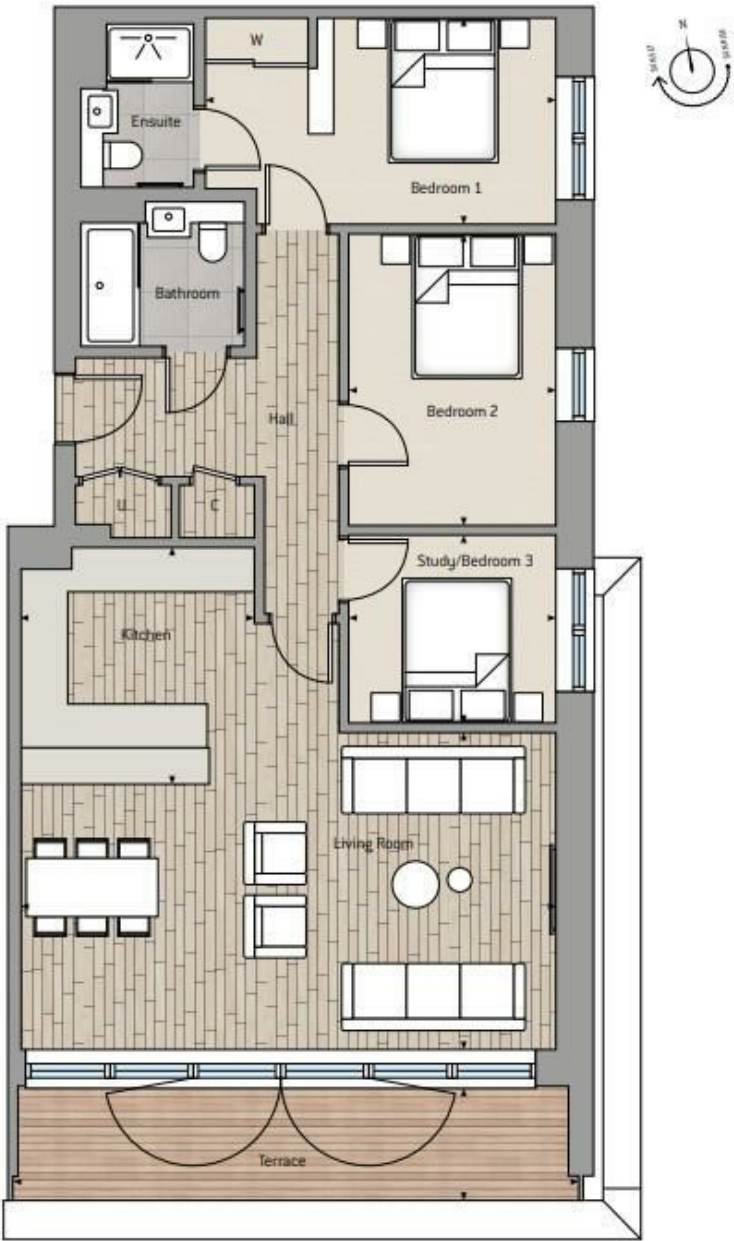
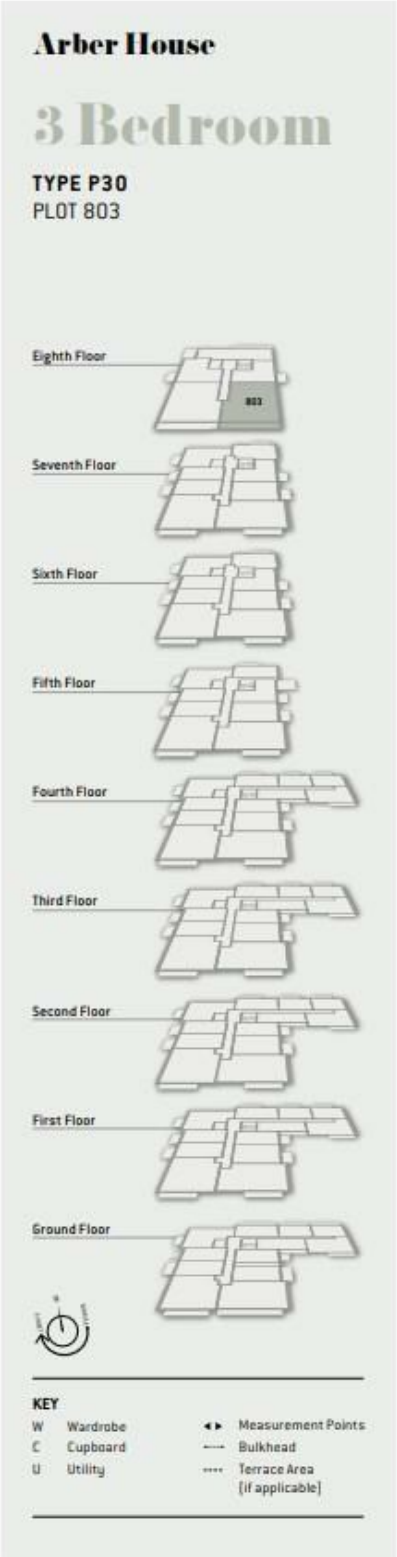


Directions





Floor Plan



<b>TOTAL AREA</b>	<b>98.58 sq m</b>	<b>1061 sq ft</b>	Kitchen	3.23m x 3.26m	10' 7" x 10' 8"
Terrace total area	11.94 sq m	128 sq ft	Living Room	7.34m x 4.37m	24' 1" x 14' 3"
			Bedroom 1	4.82m x 2.85m	15' 9" x 9' 4"
			Bedroom 2	2.86m x 4.05m	9' 4" x 13' 3"
			Study/Bedroom 3	2.86m x 2.60m	9' 4" x 8' 6"
			Terrace	8.15m x 1.58m	26' 8" x 5' 2"

These particulars, whilst believed to be accurate are set out as a general outline only for guidance and do not constitute any part of an offer or contract. Intending purchasers should not rely on them as statements of representation of fact, but must satisfy themselves by inspection or otherwise as to their accuracy. No person in this firms employment has the authority to make or give any representation or warranty in respect of the property.

